



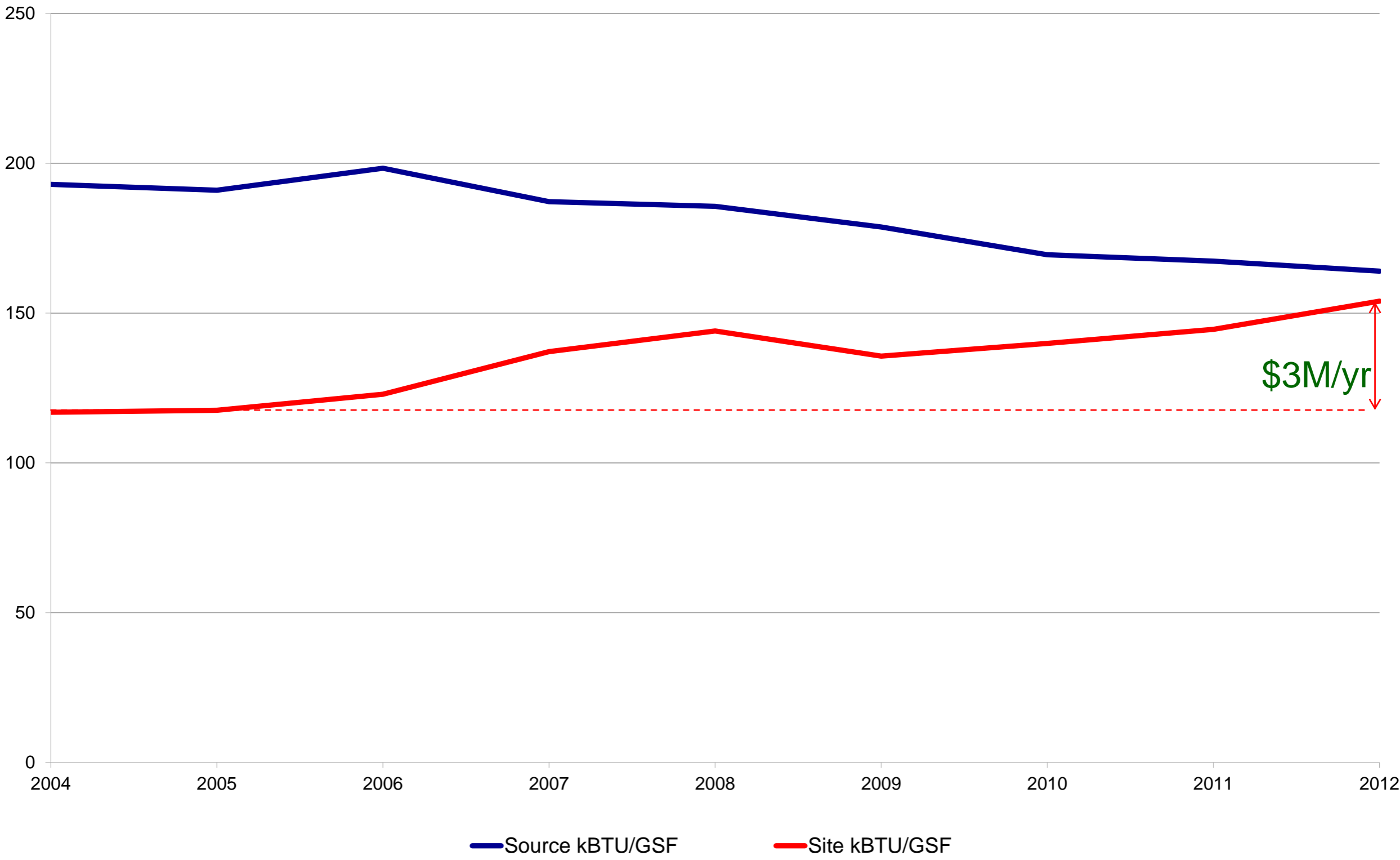
Obtaining Capital Sources for Energy Efficiency Projects

Matt O'Keefe, UNH Energy Manager
University of New Hampshire

April 17, 2013



Campus Energy Intensity



Need for Energy Efficiency

- High ROI on efficiency projects
- Buildings will be there for a while
- Technology changes
- Budget stability



Energy Efficiency Fund Concept

- Revolving Fund
- 100% reinvestment
- WildCAP guiding document
- Energy Task Force managed
- Balanced Project Portfolio



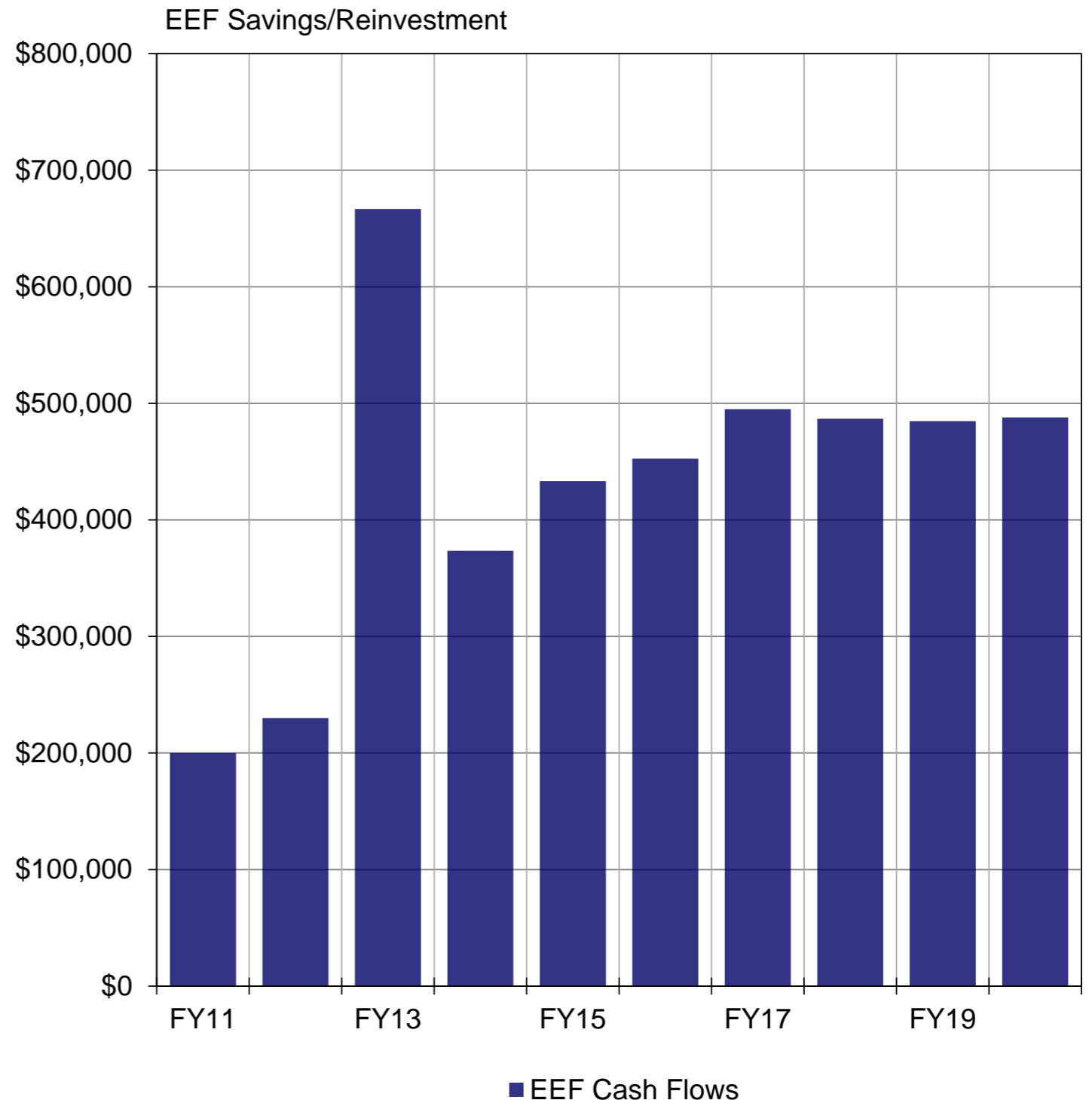
Seeding the Fund

- Internal funding difficulties
 - » Compete with other capital repair needs
 - » Foundation reluctant with new investment
 - » Borrowing constraints tied to outdated legislative policies
- Grant applications
- ARRA investment



Forecasted Cash Flows

- \$650k ARRA award
- \$400K one time internal capital infusion
- \$60K Renewable Grant
- \$350K Efficiency Incentive Payment
- **\$4 saved for every \$1 invested**



Questions



www.energy.unh.edu

